

Comma 3901



Comma 3902



Comma 3904



2 Point
Lock Lever

Sabre 3911



Sabre 3912



Cobra 3921



Cobra 3922



Delta 3931



Delta 3932



Swan 3941



Swan 3942



Line 3951



Line 3952



Line 3954



2 Point
Lock Lever

Casement Fasteners

Designed for wood and aluminium windows. The lever style options complement various ranges of lever handles. Base plate styles are based on the Line range and a tapered style.

The Casement Fasteners have a semi-concealed fixing for both the lever and the strike.

The Mortice Strike, at right angles to the Fastener; has a nylon insert to avoid metal to metal contact with the locking pin.

Handing of Casement Fasteners

The Casement Fasteners shown are all Left Hand (LH). Specify Left Hand (LH) or Right hand (RH). The Wedge Strike is either flush or offset 6mm.

Casement Fasteners and Code Numbers

	With Mortice Strike	With Wedge Strike (flush)	With Wedge Strike (6mm offset)	2 Point Lock Lever
Comma	3901	3902	3903	3904
Sabre	3911	3912	3913	-
Cobra	3921	3922	3923	-
Delta	3931	3932	3933	-
Swan	3941	3942	3943	-
Line	3951	3952	3953	3954
Angle	3961	3962	3963	-
Rod	3971	3972	3973	3974

To order specify; (example)

Code number	Handing	Base Plate Style	Finish
3901	LH	Tapered or Line	SCPV

Angle 3961



Angle 3962



Rod 3971



Rod 3972



Rod 3974



2 Point
Lock Lever

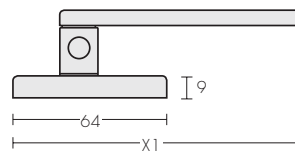
Mortice Strike – Flush Mounted
3995



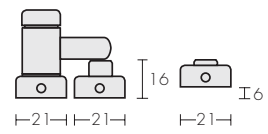
When the Casement Strike needs to be flush mounted, specify Mortice Strike 3995 above. It is visible-fixed and has a nylon insert to avoid metal to metal contact with the locking pin.

Dimensions

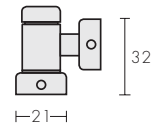
Line 3952 example shown



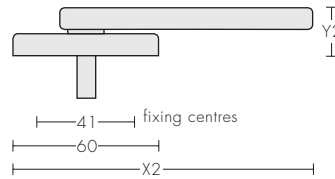
With Wedge Strike



With Mortice Strike



Line 3953 example shown



Dimensions overall (mm)

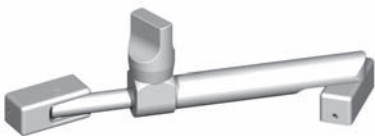
	casement fastener		2 point lock lever	
	length	height	length	height
	X1	Y1	X2	Y2
Comma	125	47	120	22
Sabre	125	47	-	-
Cobra	120	47	-	-
Delta	120	38	-	-
Swan	120	47	-	-
Line	120	38	126	20
Angle	120	38	-	-
Rod	120	38	114	22

Telescopic/Security Stay

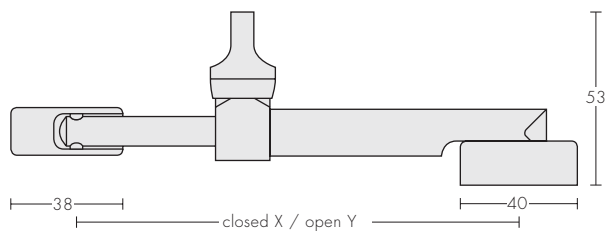
The Telescopic/Security Stays have a semi-concealed fixing at each end. The thumb turn operates onto a clutch ring which grips the extension rod for a positive lock.

The Telescopic Stay travel is 130mm. The Security Stay travel is limited to 55mm, to limit the window opening. This needs to be positioned so that at its full extension, the window opening is limited to 100mm; as required by some local body bylaws for upper storey windows.

Security Stay 3998



Telescopic Stay 3999



Security Stay 100mm extension: X = 120 / Y = 180
Telescopic Stay 175mm extension: X = 195 / Y = 330