

23mm Backset

30mm Backset

38mm Backset

23mm Backset

30mm Backset

38mm Backset

MORTICE CENTRELINE

MORTICE FOR ALL 995 SERIES LOCKS & LATCHES

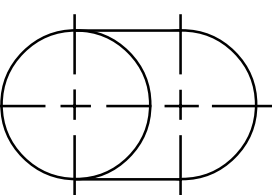
200mm

20mm

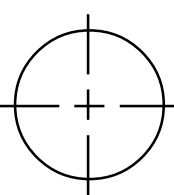
6.5mm DIAMETER



20mm DIAMETER ONE HOLE FOR TURN TWO HOLES FOR CYLINDER



SPINDLE HOLE 20mm DIAMETER



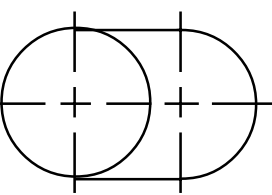
6.5mm DIAMETER



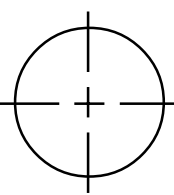
6.5mm DIAMETER



20mm DIAMETER ONE HOLE FOR TURN TWO HOLES FOR CYLINDER



SPINDLE HOLE 20mm DIAMETER



6.5mm DIAMETER



**MORTICE DEPTHS**

23mm Backset = 44mm  
30mm Backset = 51mm  
38mm Backset = 59mm

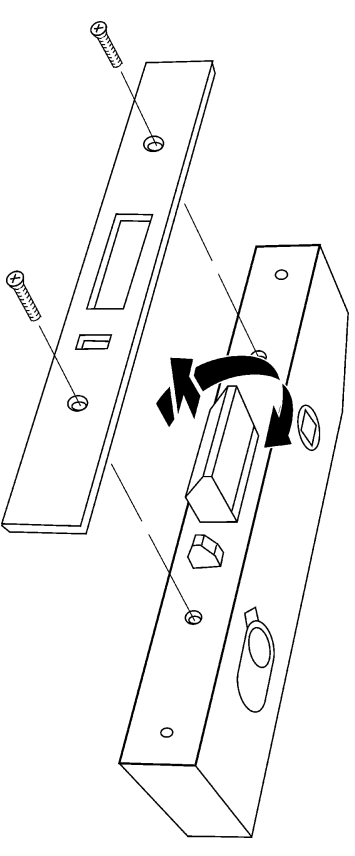
# LEGGE PACIFIC

## 995 NARROW STYLE MULTI FUNCTION LOCK

### INSTALLATION INSTRUCTIONS

RIGHT HAND DOOR		LEFT HAND DOOR	
OPENING IN	OPENING OUT	OPENING IN	OPENING OUT
OUTSIDE	OUTSIDE	OUTSIDE	OUTSIDE

- TO REVERSE BOLT**
1. REMOVE FOREND
  2. FOR EXTENDED BACKSETS REMOVE EXTENSION PACKER
  3. PULL & ROTATE BOLT THROUGH 180° CLOCKWISE



### 995 HANDING/FUNCTION ADJUSTMENT

#### V SERIES

**HANDING ADJUSTMENT**  
(Inside handle free)

**To set for left hand**  
Push in and turn clockwise



Set adjuster as shown

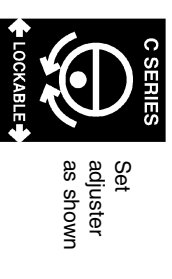
#### V SERIES

**To set for right hand**  
Push in and turn anti-clockwise

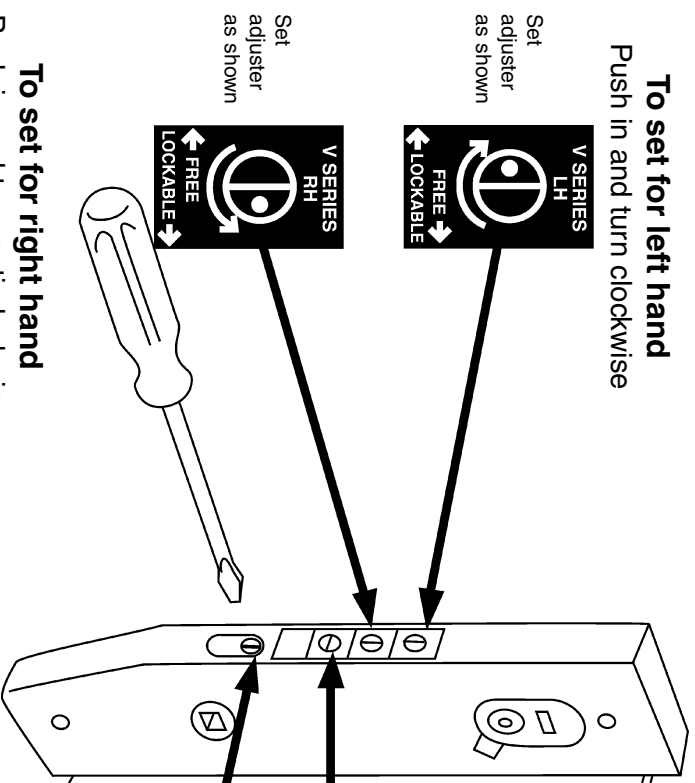


Set adjuster as shown

**To set for C SERIES**  
(Both handles lockable)



Set adjuster as shown



HANDING/FUNCTION ADJUSTER

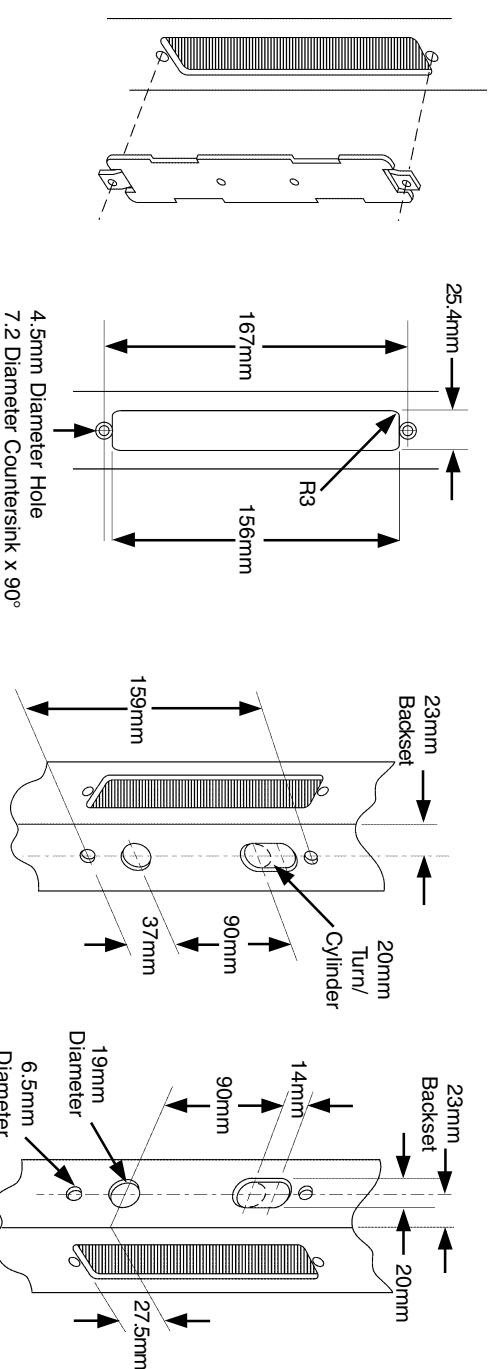
**NOTE: ENSURE LOCKING BAR IS IN THE UNLOCKED POSITION.**

### IMPORTANT

A MAXIMUM CLEARANCE OF 5mm IS RECOMMENDED BETWEEN LOCK FOREND AND STRIKER PLATE FOR SECURITY REASONS.  
995 LOCKS & LATCHES ARE DESIGNED FOR USE WITH SPRUNG DOOR FURNITURE. THE USE OF UNSPRUNG DOOR FURNITURE IS NOT RECOMMENDED.

## Metal Door Preparation

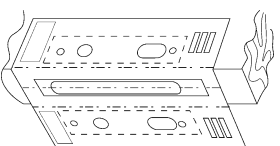
1. Establish required height of the lockset on the door
2. Cut window for forend 156mm x 25.4mm with a 3mm radii
3. Place template in opening. Drill 4.5mm diameter holes with a countersink of 7.2mm diameter x 90°.
4. Drill appropriate holes for the selected lockset.



## Wooden Door Preparation

1. Establish required height of lockset on the door.
2. Cut mortise slot, using template for the appropriate backset.
3. Fit lock into mortise, scribe around forend and remove wood to allow flush fit to door.
4. Remove lock and use template to mark and drill holes to suit lock and furniture being used.

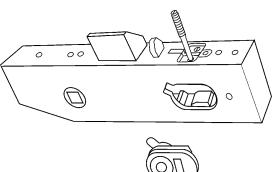
**NOTE:**  
DO NOT DRILL HOLES RIGHT THROUGH DOOR. THE FURNITURE MAY NOT COVER ANY HOLES THAT ARE INCORRECTLY DRILLED.



## Turn Adapter

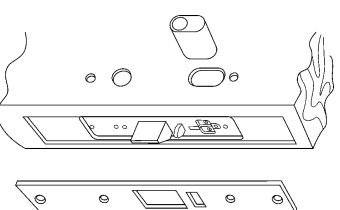
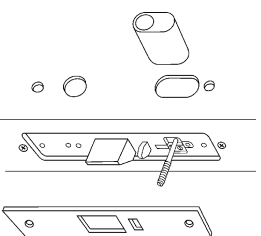
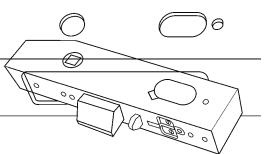
1. Remove retaining screw from the side that the adapter is to be fitted.
2. Insert adapter and secure with retaining screw.

**NOTE:**  
TURN ADAPTER ROTOR IS REQUIRED TO BE ENGAGED IN THE YOKE OF THE LOCKING BAR



## Install Lock

1. Insert lock into door and secure
2. If cylinders are required to be fitted, remove retaining screw from the side that the cylinder is to be fitted.
3. Insert cylinder and secure with retaining screw.
4. Secure forend.



## Install Strike

### METAL DOORS

1. Prepare door jamb cutout.
2. Fit strike box to frame.
3. Fit strike to strike box.

### WOODEN DOORS

1. Mark door frame for strike.
2. Remove wood so strike sits flush with frame.
3. Mortise 15mm deep recess for bolt.
4. Optional - Mortise out for plastic strike box.
5. Secure strike to frame.

